



Medical

170711.4WUS

QPoint® Tap Water Filter



Combining Fixed Docking Station and Exchangeable Filter Capsule for up to 2 Months Use

Features

- ▶ Double layer 0.2 µm sterilizing grade filter membranes
- ▶ Fixed Docking Station and exchangeable Filter Capsule
- ▶ Robust pre-filtration
- ▶ Compatible with commonly used systemic disinfection

Benefits

- ▶ Retains microorganisms without volume restriction
- ▶ Waste reduction, cost reduction and improved logistics
- ▶ Higher dirt capacity for high flow rates
- ▶ Integrates with water safety plans



QPoint - More than Filtration

Background

The QPoint Tap Water Filter Assembly with exchangeable Filter Capsule for up to 62 days (2 months) use provides 0.2 µm sterilizing grade filtered water at the Point-of-Use^{1, 2}.

The high technology integrated prefiltration layer delivers exceptional particulate trapping capacity with good flow rates, and protects the sterilizing grade membranes enabling long performance life. The Filter Capsule retains bacteria, protozoa, and fungi without volume restriction; and is an FDA 510(k) Class II Device.

A combination of technologies within the Filter Capsule helps to minimize the risk of retrograde contamination. However, these technologies do not replace local water testing and/or hygiene measures at the local environment.

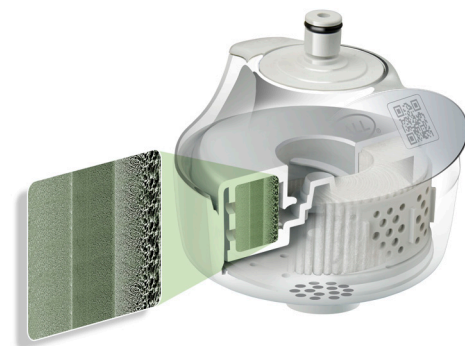
The chrome finish Docking Station will fit to all standard tap water outlets via Quick Connect Adaptors. The combination of the fixed lifelong Docking Station with the disposable Filter Capsule is compact, reduces waste, reduces costs and improves logistics.

Technical Data

QPoint Docking Station - Tap Assembly (QDTC)

Diameter (nominal)	3.5" (88 mm)
Weight (nominal)	3.0 oz (84 g)
Temperature	Continuous influent temperature 140 °F (60 °C) Maximum influent temperature 167 °F (75 °C) for a total cumulative period of 90 minutes over the life of each Filter Capsule
Maximum Operating Pressure	75 psi (5 bar) at continuous 140 °F (60 °C) influent temperature
Cleansing and Disinfection	External surfaces may be cleaned using chrome compatible sanitizing agents During routine water system disinfection the Docking Station with attached Filter Capsule can be left in place to enable the outlet to be flushed
Main Materials of Construction	Polycarbonate/Acrylonitrile Butadiene Styrene (51%), Glass Filled Nylon (22%), Polyester (20%), Stainless Steel (4%)
Packaging	Recycled cardboard outer packaging

* For Quick Connect Adaptors suitable for use with QPoint Docking Station - Tap Assembly with Quick Connect Inlet (QDTC), please contact your local sales office or visit www.pall.com/medical.



QPoint Filter Capsule* (QJ212A; QJ22A) 510(k) Class II Devices

Flow Rates (nominal)	1.5 gal / min at 15 psi 3.5 gal / min at 44 psi 5.0 gal / min at 75 psi	5.7 L / min at 1 bar 13.1 L / min at 3 bar 18.8 L / min at 5 bar
Diameter (nominal)	3.5" (88 mm)	
Weight (nominal)	4.2 oz (119 g)	
Temperature	Continuous influent temperature 140 °F (60 °C) Maximum influent temperature 167 °F (75 °C) for a total cumulative period of 90 minutes over the life of each Filter Capsule	
Maximum Operating Pressure	75 psi (5 bar) at continuous 140 °F (60 °C) influent temperature	
Cleaning and Disinfection	Compatible and complementary to common surface and systemic disinfection programs	
Main Materials of Construction	Polyester (83%), Polypropylene (10%), Polyethersulphone (7%), (Recyclable)	
Packaging	Recycled cardboard outer packaging. Ethylene Vinyl Acetate plastic film blister. Tyvek♦ polyethylene lid	

*For compliance to National Water Approvals, see pall.com/medical.

Ordering Information

Reorder Code	Product Description	Packaging
Docking Station		
QDTC	Tap Assembly with Quick Connect Inlet	1 unit/pkg
Filter Capsules		
QJ212A	Jet Outlet, 0.2 µm Filter 510(k) Class II Device	12 units/pkg
QJ22A	Jet Outlet, 0.2 µm Filter 510(k) Cleared Device	2 units/pkg

References

1. QPoint Tap Water Filter Assembly Validation Guide (170729.1WUS)
2. QPoint Tap Water Filter Assembly Field Evaluation Report (170729.2WUS)

Visit us on the Web at www.pall.com/medical

International Offices

Pall Corporation has offices and plants throughout the world in locations such as: Argentina, Australia, Austria, Belgium, Brazil, Canada, China, France, Germany, India, Indonesia, Ireland, Italy, Japan, Korea, Malaysia, Mexico, the Netherlands, New Zealand, Norway, Poland, Puerto Rico, Russia, Singapore, Spain, Sweden, Switzerland, Taiwan, Thailand, the United Kingdom, the United States, and Venezuela. Distributors in all major industrial areas of the world.

The information provided in this literature was reviewed for accuracy at the time of publication. Product data may be subject to change without notice. For current information consult your local Pall distributor or contact Pall directly.

© 2017 Pall Corporation. Pall,  and QPoint are trademarks of Pall Corporation. ® indicates a trademark registered in the USA. TM indicates a common law trademark. ♦Tyvek is a registered trademark of E.I DuPont de Nemours & Co. or its affiliates.



Pall Corporation
25 Harbor Park Drive
Port Washington, NY 11050

516.484.3600
medical.pall.com
uscustomerservice@pall.com

phone
web
email